

# Full HD SQ11 Sports Mini DV Camera

ver 1.2 (January, 02, 2018)

## Properties

### Feature:

SQ11 mini 1080P full HD car DVR camera recorder  
High definition full HD1080P  
Compact design, portable handheld  
Support TV out, TV monitor video connection  
Built-in lithium battery sustainable camera up to about 100 minutes  
Support 32GB TF card max. (Memory card not included)

### Specification:

Video format	1920 x 1080P, 1280 x 720P
Image resolution	12MP (4032 x 3024)
Image proportion	4 : 3
Support system	Windows ME / 2000 / XP / 2003 / Vista, Mac OS, Linux
Battery capacity	200mAh
Working time	About 100 minutes at 1080P 30fps
Charging time	About 2 - 3 hours
Charging voltage	DC 5V
Interface type	Mini 8 pin USB
Cable length	80cm

### Package Included:

1 X Mini Car DVR Camera  
1 X USB / TV Out 2-in-1 Cable  
1 X Bracket  
1 X Clip  
1 X User Manual

## Info video data

```
Format                : AVI
Format/Info           : Audio Video Interleave
File size             : 819 MiB
Duration              : 5 min 1 s
Overall bit rate      : 22.8 Mb/s
Recorded date         : 2018-06-29

Video
ID                    : 0
Format                : JPEG
Codec ID              : MJPG
Duration              : 5 min 0 s
Bit rate              : 29.0 Mb/s
Width                 : 1 920 pixels
Height                : 1 080 pixels
Display aspect ratio  : 16:9
Frame rate            : 30.000 FPS
Color space           : YUV
Chroma subsampling    : 4:2:0
Bit depth             : 8 bits
Compression mode      : Lossy
Bits/(Pixel*Frame)    : 0.467
Stream size           : 1.02 GiB

Audio
ID                    : 1
Format                : PCM
Format settings, Endianness : Little
Format settings, Sign  : Signed
Codec ID              : 1
Duration              : 5 min 1 s
Bit rate mode         : Constant
Bit rate              : 512 kb/s
Channel(s)            : 1 channel
Sampling rate         : 32.0 kHz
Bit depth             : 16 bits
Stream size           : 18.4 MiB (2%)
Alignment             : Aligned on interleaves
Interleave, duration  : 999 ms (29.96 video frames)
```

## Info photo data

### Informations du fichier

Fichier :

PICT0001.jpg

Situé dans :

K:\Misc\SQ11-Sports HD DV mini camera-review\Outside

Type : Image ACDSee 18 JPEG

Taille : 6,9 Mo

Créé : 2017-07-26 18:34:54

Modifié : 2017-07-26 17:08:50

Accédé : 2017-07-27 19:29:18

☒ Lecture seule ☐ Masqué

### Attributs de l'image

Dimensions de l'image : 4032 x 3024 (12.2 MP)

Taille sans compression : 34,9 Mo

Profondeur de bit : 24-bit couleur

Pages : 1 page(s)

Pixels Par Pouce: 50

Dimen. image (en pouces) : 50

Profil colorimétrique intégré :  
S0

### Métadonnées EXIF (récapitulatif) :

Modèle

Date/heure originale

# Operations

## Charging

- Use the provided cable to charge the camera. Plug the mini-USB connector into the camera and the normal USB plug in your computer or use an external charger. Charging time, according the manual will take 2-3 hours. - A flashing red Led indicates the charging cycle. After charging is complete, the Led turns into solid red. Keep charging the camera for additional 30 minutes. Working time according the manual : 100min. (real time test : 32min) You can also connect the camera to an external power source while using all the existant functions of the camera.

## Recording

- Push the on/off button for 2 seconds to power the camera  
( If no card is inserted, a blue Led will light for a few seconds, after that a red Led is flashing and the camera turns off. When an SD-card is inserted and after power on the camera, a solid blue Led is visible.

### 720p recording

- When blue Led is lighting, push one time the on/off button to begin recording. The blue Led is flashing 3 times and the recording in 720p is beginning. During 720p recording, no Led are lit. Push again the on/off button and the recording stops. The state of the Led returns to blue.
- To power off the camera, push the on/off button for about 6 seconds and the camera will turn off.

### 1080p recording

- Change to 1080p by using the 'Mode' button. Push one time the 'Mode' button, the Led is turning from blue to blue/red. Push one time the on/off button to begin recording. The Led is flashing three times blue and red and the recording in 1080p begins. During 1080p recording, no Led are lit. Push again the on/off button and the recording stops. The state of the Led returns to blue/red.
- To power off the camera, push the on/off button for about 6 seconds and the camera will turn off.

Note : the camera will continuously record 5 minutes sequences for both 720p and 1080p modes. When the SD-card is full, the camera will automatically loop and delete the oldest file. When the battery is nearly empty, the camera will automatically save the last sequence and power the camera off.

### Photo shooting

- Change to Photo Mode by using the 'Mode' button. Push two times the 'Mode' button, the Led is turning from blue to blue/red and than to red. Take a Photo by pressing the on/off button.
- To power off the camera, push the on/off button for about 6 seconds and the camera will turn off.

## Night vision

- It is possible to record night shots by using the incorporated infrared Leds. You can record a video in 720p as well in 1080p.

### 720p infrared recording

- Power the camera and wait until the blue Led is lighting. Press the on/off button for 2 seconds. The red Led will flash twice. You are now in night vision mode. Push one time the on/off button to begin recording. There is no Led indication during recording. Push again the on/off button to stop the recording.

### 1080p infrared recording

- Power the camera and wait until the blue Led is lighting. Change to 1080p by pressing one time the 'Mode' button. Press the on/off button for 2 seconds. The red Led will flash twice. You are now in night vision mode. Push one time the on/off button to begin recording. There is no Led indication during recording. Push again the on/off button to stop the recording.

## Motion detection

### 720p motion detection

- Power the camera and wait until the blue Led is lighting. Press the 'Mode' button for about 3 seconds. The blue/red Led is flashing three times and the motion detection becomes directly active. During the recording, the Led is off. The camera will now record a sequence of a minimum of 1 minute. As long as a movement is detected the camera will continuously record (up to 5 minutes maximum). After saving this sequence, the camera will stop recording. The Led is still off, but the motion detection mode remains activated. Once a new movement is detected, the camera begins again to record as long as a movement is detected (5 minutes sequence max). A new movement detection is reported by a short blue/red flashing Led. Stop the detection mode by pressing the on/off button.

### 1080p motion detection

- Power the camera and wait until the blue Led is lighting. Press the 'Mode' button one time to change to 1080p. Press the 'Mode' button for about 3 seconds. The blue/red Led is flashing three times and the motion detection becomes directly active. During the recording, the Led is off. The camera will now record a sequence of a minimum of 1 minute. As long as a movement is detected the camera will continuously record (up to 5 minutes maximum). After saving this sequence, the camera will stop recording. The Led is still off, but the motion detection mode remains activated. Once a new movement is detected, the camera begins again to record as long as a movement is detected (5 minutes sequence max). A new movement detection is reported by a short blue/red flashing Led. Stop the detection mode by pressing the on/off button.

## Time Stamp

- When a blank SD-card is inserted, the camera will create a 'txt' file (TIMEREST.txt) to give you the opportunity to display the time/date data on your video/photo. The format is 20170726152035 N (for no display) and 20170726152035 Y (for display). Open the TIMEREST.txt in a text editor and set the correct date and time as well as 'N' or 'Y' at the end to display or not the time stamp in your video/photo.



## Resetting the camera

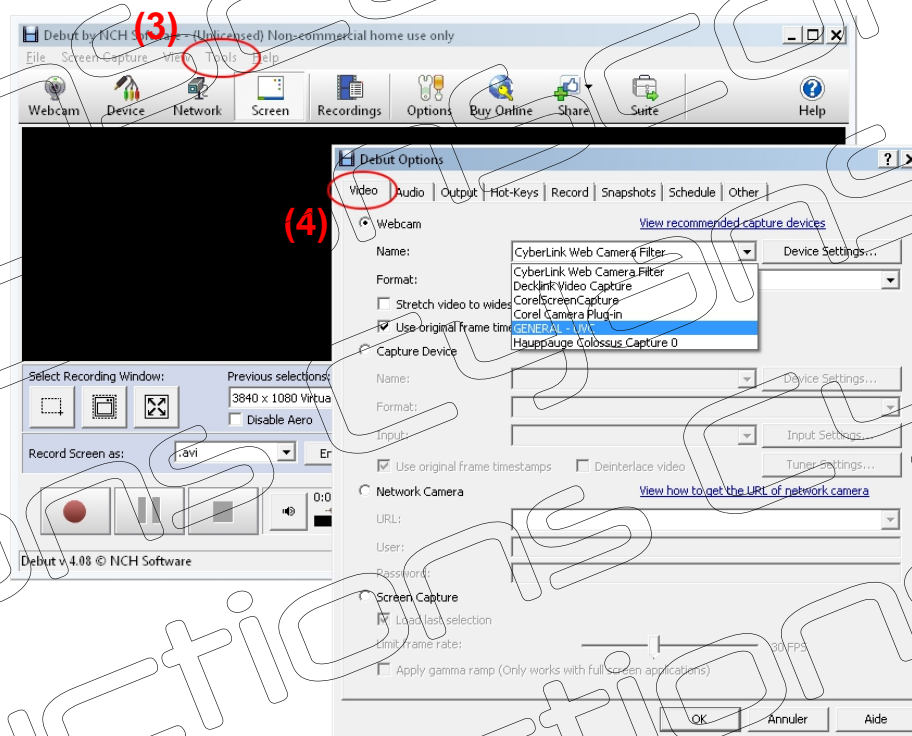
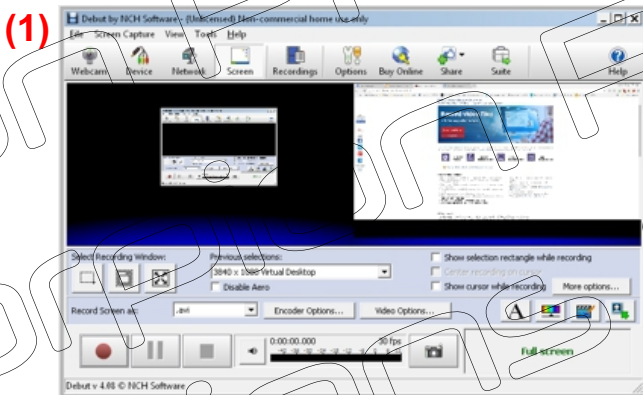
Resetting the camera is really simple

- Turn on the camera. Wait until the blue LED is lighting
- Take a small object like a paperclip
- Insert the paperclip into the hole near the mini-USB socket  
(pay attention do not insert the paperclip into the other hole, this is the microphone)
- The blue LED is going off, the reset is done
- Turn on again the camera for normal operations

## Using the SQ11 as a webcam

It is possible to use the SQ11 as a webcam, but not all programs are supporting this camera. One of a very interesting program is the '[Debut Video Capture Software](#)' from NCH which I use.

- Download the program from the website and install it (1)
- Connect your SQ11 to your computer and wait until the drivers are installed (note : you do not need to remove the SD-card)  
The LED first lights blue, than it is blinking red, which means that the camera is in charge
- Push the on/off button of the camera (additional drivers will be installed) (2).
- Open the 'Tools' menu (3), then 'Options'. In the Video tab, chose the device 'GENERAL - UVC' (4)
- The SQ11 is now ready for use



## Sample of a captured image

